



George County Board of Supervisors
Ken Flanagan, Communications Director
Office: 601-247-2104

GC Industrial Park expanding with \$115 Million Wood Pellet Facility

Release Date: 06/27/13

Green Circle Bio Energy, Inc. officially announced today the company intends to build a wood pellet facility in George County's Industrial Park, investing an estimated \$115 million. This state-of-the-art plant will produce 500,000 metric tons of pellets a year and is expected to create 126 new full-time local jobs.

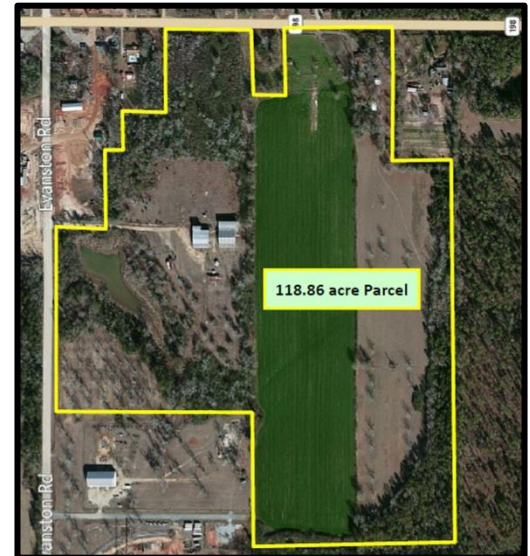


"Green Circle's decision to locate these operations in George County is great news for the entire state, and I am proud to welcome the company as the newest member of Mississippi's business community," Gov. Phil Bryant said. "I appreciate the Green Circle team for placing their confidence in our supportive business climate, investing in our state and creating these job opportunities for the residents of south Mississippi. I wish the company many years of success in Lucedale."

The George County plant is expected to be in full operation by spring 2015 manufacturing wood pellets for sale and shipment to European markets for electric generating facilities. The George County plant will be the largest wood pellet producer in the State of Mississippi.

"This is the type of industrial development we want for George County's Industrial Park," Supervisor Kelly Wright, 2013 Board President explained. "Green Circle has been producing and selling pellets for eight years and is a global leader in this emerging energy market. We are proud to have Green Circle as a tenant in our park."

Green Circle currently operates the world's second largest wood pellet plant in Cottondale, Florida. The Cottondale Plant directly employs 81 individuals with several hundred indirect jobs and infuses more than \$70 million in the local community.



"We are looking forward to being a part of George County and its future economic growth. The Industrial Park is the ideal location for our expansion. It's inside a large wood basket area, and it's close to the Port of Pascagoula, which will export the wood pellets," said Morten Neraas, CEO of Green Circle Bio Energy. "Our relationships with the Board of Supervisors and the Port of Pascagoula led us to George County."

-More-

The George County Board of Supervisors and executives from Green Circle signed a long-term lease agreement for property in the Industrial Park during today's Board meeting. This marks the largest expansion and largest new tenant within the Industrial Park since American Tank and Vessel built its home office in George County.



Another vital partnership in this project's development is the Port of Pascagoula, Mississippi's largest port, with its deep water terminals and access to ports around the world.

"The Jackson County Port Authority and local stakeholders are extremely pleased to have the opportunity to be the gateway to foreign markets for Green Circle's new wood pellet production facility," Mark McAndrews, Port Director said.

"Mississippi forest products have been transported to international markets through the Port of Pascagoula for decades and we perceive wood pellet exports to be a valuable expansion of this trade. Final details for financing and design of the marine terminal are nearing completion and we look forward to starting the construction process in the very near future," McAndrews said.

Vital assistance for this project has been provided by: the Mississippi Development Authority, the Port of Pascagoula, Multi-Mart Water System, Atmos Energy, Singing River EPA, Mississippi Power, the Southern MS Planning & Development District, and the City of Lucedale.

A groundbreaking ceremony for the 120 acres plant site is tentatively scheduled for this fall. For more information about this project, call Ken Flanagan, George County Community Development Director at 601-247-2104.

Photo Outline:

- The yellow lines depict the project boundaries for Green Circle's new wood pellet plant in George County's Industrial Park off Evanston Road.
- George County supervisors toured the inner workings of Green Circle's Cottondale Plant. **L to R:** Supervisor Kelly Wright, Supervisor Fred Croom, Supervisor Henry Cochran and Greg Martin, Cottondale Plant Manager.

Project Background

- **Wood Pellets**
Pellets are made from 100 % softwood and hardwood forest thinnings, un-merchantable trees and sawmill residue material. Wood is chipped, dried and ground down into fine sawdust, which passes through an extrusion process where the sawdust is compressed into an 8 mm diameter pellet. Wood pellets are used in coal-fired power stations, as a replacement for coal, and is presently the only commercially viable base load renewable energy source.
- **George County Industrial Park**
Located outside of the City of Lucedale; the Industrial Park is a 353 acre site, surrounded by additional 1,000 acres of developable land. The site has all utilities to its boundaries (certified "Project Ready" by Mississippi Power), as well as, a completed rail spur served by MS Export Railroad. With excellent location on the Hwy. 98/Hwy. 63 corridors and skilled labor force, George County's Industrial Park is development ready.
- **Green Circle Bio Energy**
Located in Cottondale, Fla., Green Circle's wood pellet plant is the second largest in the world boasting an annual production capacity of 600,000 tons. The facility features the highest quality and latest technology in wood processing and refinement. Green Circle is part of the JCE Group of Sweden, a diversified company operating in a variety of markets, including the traditional energy sector and forestry-related businesses.